

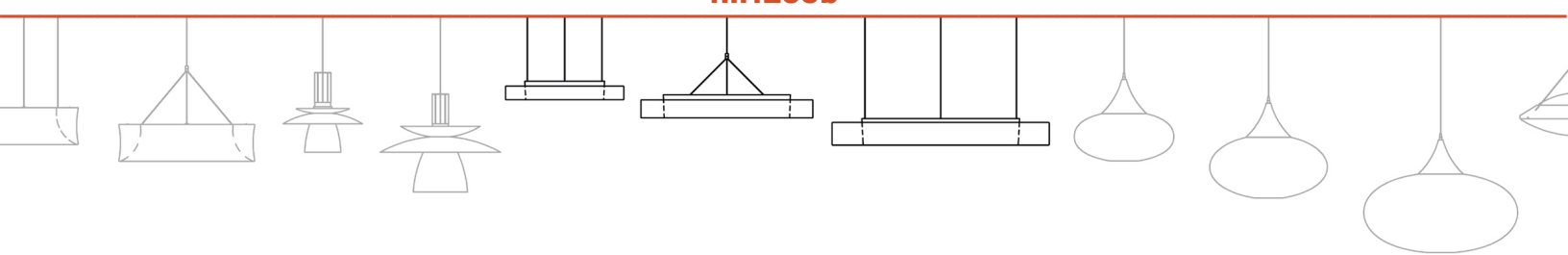


P6426 26" dia x 4" ht

P6438 38" dia x 5" ht

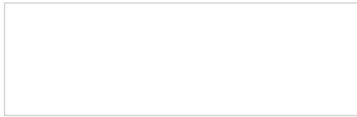
P6448 48" dia x 6" ht

**n.r.2oob™**



Project W | Louis Joyner Architects | Tammi Kegerreis, photographer

## Powder Coat Paint Finishes



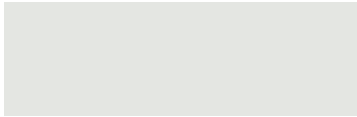
**MW** matte white



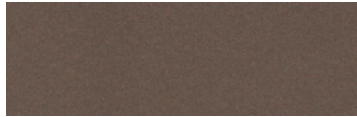
**CP** champagne



**YO** yellow 1018



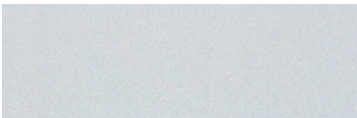
**TW** textured white



**BZ** bronze



**RD** red 3020



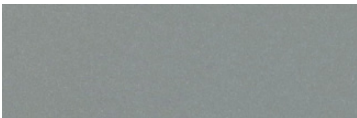
**AP** anodized paint



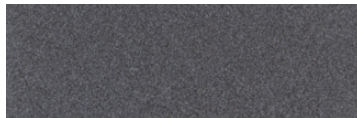
**BS** brass



**BU** blue 5017



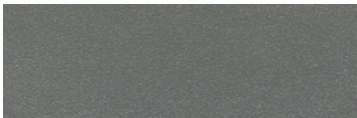
**SS** satin silver



**GM** gun metal



**OR** orange 2011



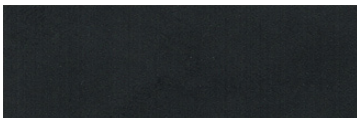
**TG** textured gray



**BR** brick red



**MN** mint 6019



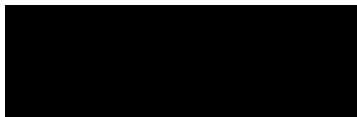
**FB** flat black



**BN** brown 8023



**GR** green 6018



**SB** satin black



**MB** military blue



**PL** purple 4005

For accurate color verification, actual finish samples are available upon request.

## Premium Finishes\*



**BA** brushed aluminum



**RAL#**

\*Available on select series. Consult product submittal for availability.

